

Caton  
Crossing  
Towne Square

JOLIET,  
ILLINOIS

# Exceptional Retail Space For Lease!

## *Newly Remodeled Convenience Center*

**4702-08 Caton Farm Road, Joliet, Illinois**  
**Just east of IL Route 59**

### **LOCATION**

Just east of the Caton Farm Road/Route 59 intersection. 29,000 CPD on Caton Farm Road; over 65,000 CPD at intersection. (Source: IDOT – 2009)

### **BUILDING SIZE**

6,400 square feet.

### **AREA DEMOGRAPHICS and SPECIAL FEATURES**

Over 105,000 people live within 3 miles of the intersection, average annual household income in excess of \$80,000.

### **CO-TENANCY and NEIGHBORS**

The Center is anchored by DUNKIN DONUTS, ALL CLEANERS, and JERSEY MIKE'S SUBS, shadow-anchored by TONY'S FINER FOODS and ACE HARDWARE. Neighbors include the UPS STORE, MCDONALDS, PANERA BREAD, GIORDANO'S PIZZA, SUBWAY, and many more.

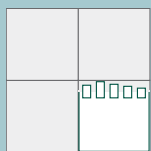
### **COMMENTS**

Newly remodeled (2012) class A building with excellent window lines. Many national co-tenants as neighbors, ample "close to front door" parking.



For further  
information,  
please contact  
James Kaplan at

707 Skokie Boulevard  
Suite 600  
Northbrook, Illinois 60062  
Tel. 847.486-8100  
[www.jkaplanco.com](http://www.jkaplanco.com)

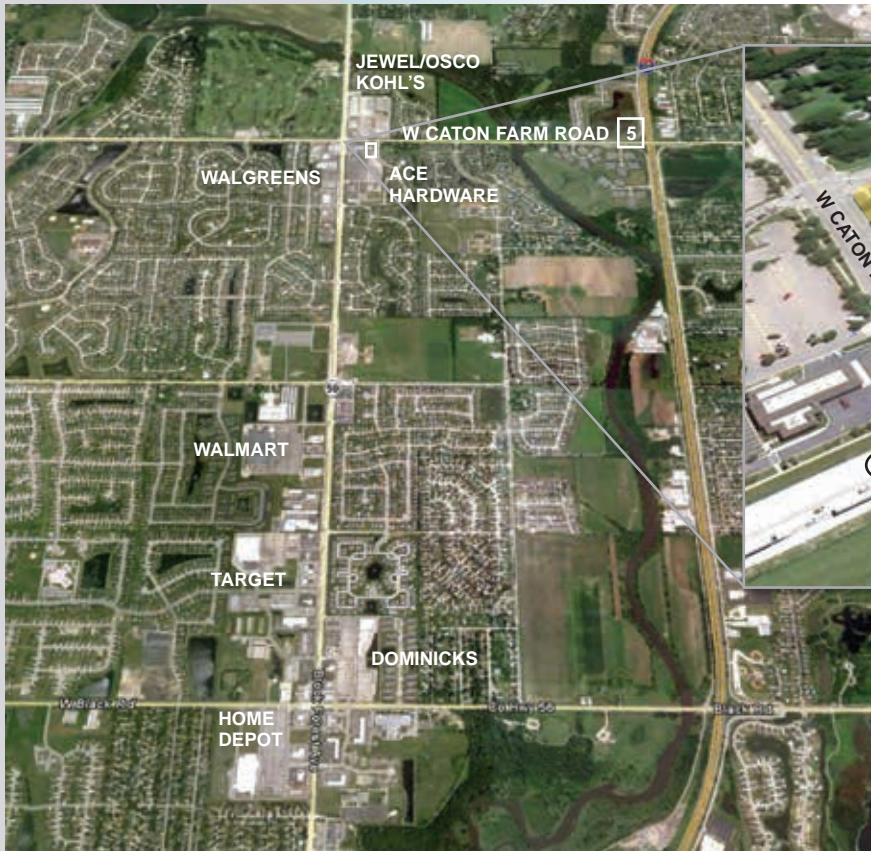


JAMES KAPLAN  
COMPANIES, LLC

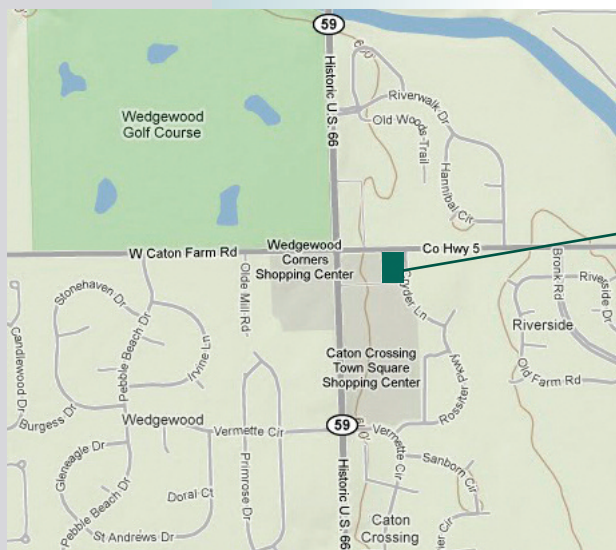
# Site Information

Caton Crossing Towne Square  
Joliet, Illinois

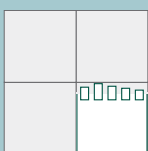
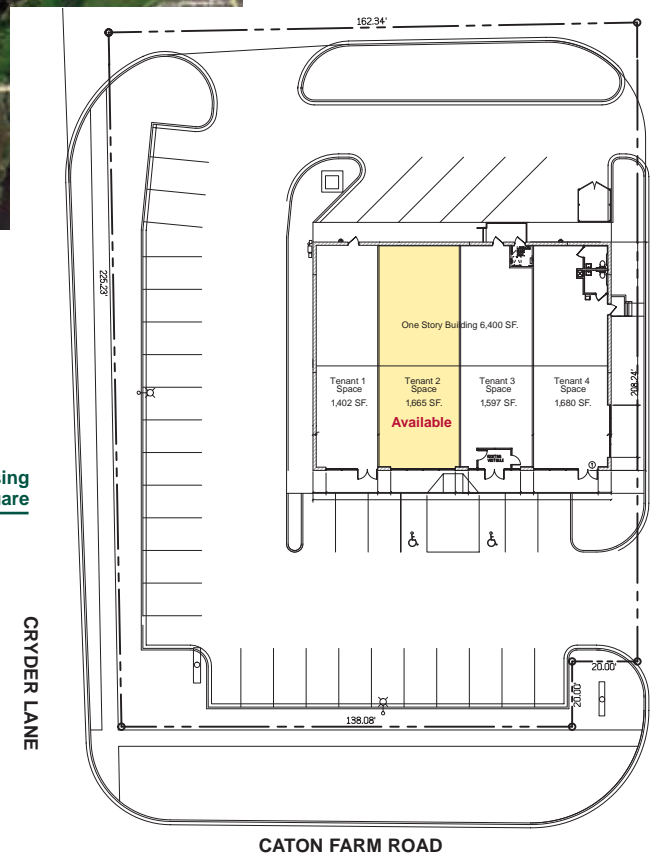
## Exceptional Retail Space For Lease



© 2010 Google / Imagery © 2010 DigitalGlobe



Caton Crossing Towne Square



JAMES KAPLAN  
COMPANIES, LLC

Information is compiled from sources deemed reliable, however, no representation as to accuracy is implied or warranted.